



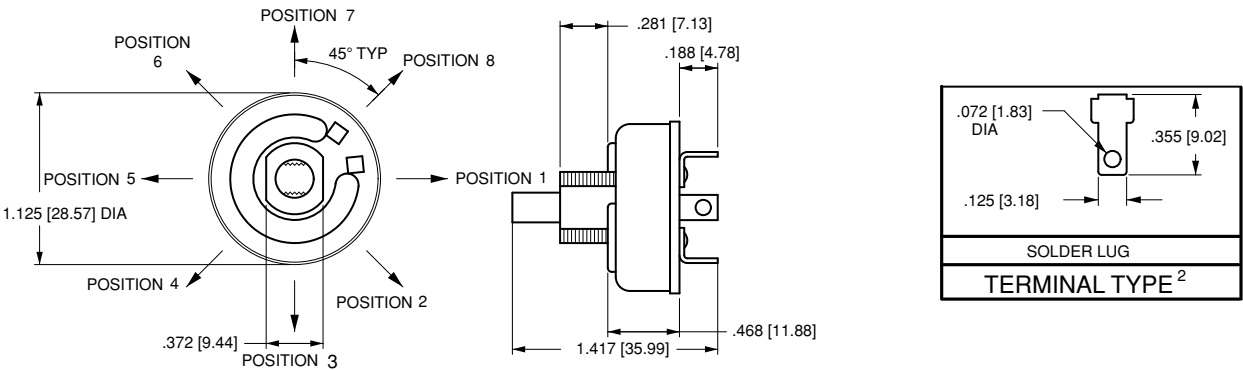
SW1010



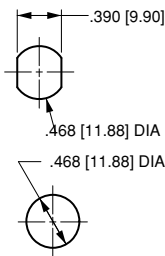
The SW1010 is single pole multi-position, general purpose rotary switch. This switch feature a nylon actuator in a metal clad construction along with a self-cleaning silver plated contact design. The SW1010 is typically used as voltage selector switch by Fender 60s-80s.

Specification

Dielectric Strength: UL, CSA 1,000V (minimum)	Base Material: Steel/Zinc Plate	
Insulation Resistance: 100 Megohms (minimum)	Actuator Material: Brass/Nickel Plate	Rating: 2A 250V AC; 4A 125V AC; 1A 125V



MOUNTING HOLES



CTUATOR KNOB

