



TAD – 12AY7/6072A Balance-Selected, GOLD-PIN High Performance Medium-Mu Twin Triode

The NEW TAD™ 12AY7/6072A with GOLD-PINS incl. Balanced Systems is a High Performance Medium-Mu Twin Triode.

Especially for HI END Audio-Stereo applications selected 12AY7 / 6072a with extremely low tolerances in amplification factor for perfectly balanced stereo channels.

Note: this selection is not required for guitar amplifiers use. For guitar amplification we recommend the RT007 12AY7 Premium Select!!

Characteristics of a bogey tube:

Electrical		
Heater:	Series	Parallel.
Voltage (AC or DC)	12.6V +/-1.0	6.3+/-0.5
Current	0.15	0.3
Heating		
		Indirect
Cathode-to-heater potential, max.		100 V
Direct interelectrode capacitances, max.***		
Grid to plate	1.4 pF	
Grid to cathode	1.3 pF	
Grid to heater	1.3 pF	
Plate to cathode	0.7 pF	
Mechanical		
Operating Position		Any
Base		E9-1, Small Buton 9 Pin
Dimensions:		
Height	56 mm	
Seated height	49 mm	
Diameter	22,8 mm	
Cooling	conventional	
Approximate net weight	13 g	

***Without external shielding, nominal values

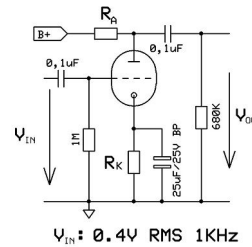
AF Power Amplifier

Maximum ratings	
DC plate voltage	300 V
Positive DC Grid Voltage	0 V
Negative DC Grid Voltage	-50 V
Plate dissipation	1.5 W
Bulb temperature (surface hottest point)	180°C
Cathode Current	10 mA

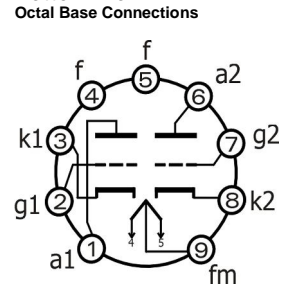
RT007-GB, 12AY7, Gold-Balanced

B+ / V	R _A / kΩ	R _K / kΩ	V _{Out} / V _{RMS}	V _{Out} / V _{IN}	THD / %	I _A / mA
200	47	1,50	9,6	24,0	1,2	1,5
250	47	1,20	10,2	25,5	0,9	1,9
300	47	1,00	10,5	26,3	0,7	2,4
350	47	0,82	10,9	27,3	0,5	3,2
400	47	0,68	11,2	28,0	0,4	3,8
200	100	1,80	11,3	28,3	1,2	0,9
250	100	1,50	12,0	30,0	0,9	1,2
300	100	1,20	12,3	30,8	0,8	1,6
350	100	1,00	12,7	31,8	0,6	2,0
400	100	0,82	13,0	32,5	0,5	2,4
200	220	2,70	12,1	30,3	1,5	0,6
250	220	2,20	12,7	31,8	1,1	0,7
300	220	1,50	13,2	33,0	0,8	0,9
350	220	1,20	13,6	34,0	0,6	1,2
400	220	1,00	13,9	34,8	0,5	1,4

Test arrangement:



Bottom View



Outline View

