



**TAD 12AU7WA/E82CC Premium Select**  
Medium-Mu Twin Triode

The **TAD™ 12AU7WA/E82CC**. Very quiet and powerful, premium selected for symmetry makes it the perfect choice for demanding HiFi and Hi-End amps as well as for driver stages in musical instrument amplification.

The **TAD™ 12AU7WA/E82CC** has a slightly reduced mid band compared to the **TAD™ 12AU7A/ECC82 (RT005)** which enhances the perception of more bass.

The **TAD™ 12AU7WA/E82CC** is a direct replacement for also E82CC, ECC802, 6N10, 6189W, 5814A and others.

**Characteristics of a bogey tube:**

Electrical		
Heater:	Series	Parallel
Voltage (AC or DC)	12.6V +/-1.0	6.3+/-0.5
Current	0.15	0.3
Heating		Indirect
Cathode-to-heater potential, max.		100 V
Direct interelectrode capacitances, max.***		
Grid to plate		1.8 pF
Grid to cathode		2.0 pF
Grid to heater		1.2 pF
Plate to cathode		1.5 pF
Mechanical		
Operating Position		Any
Base		E9-1, Small Button 9 Pin
Dimensions:		
Height		55 mm
Seated height		48 mm
Diameter		22.5 mm
Cooling		conventional
Approximate net weight		13 g

\*\*\*Without external shielding, nominal values

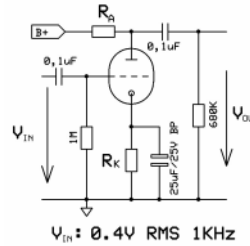
**AF Power Amplifier**

Maximum ratings	
DC plate voltage	330 V
Positive DC Grid Voltage	0 V
Negative DC Grid Voltage	-55 V
Plate dissipation	2.75 W
Cathode Current	22 mA

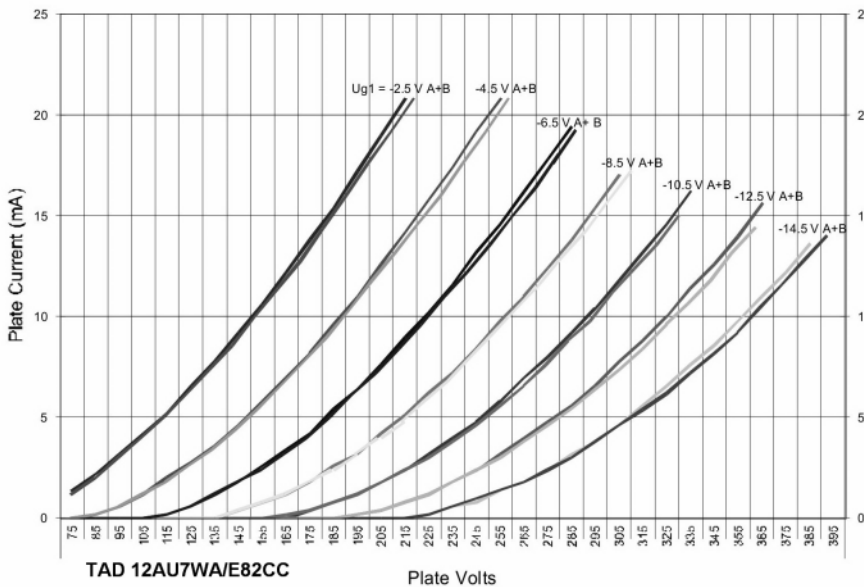
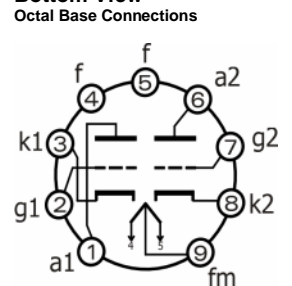
**RT065, 12AU7WA/E82CC**

B+ / V	R <sub>A</sub> / kΩ	R <sub>K</sub> / kΩ	V <sub>Out</sub> / V <sub>RMS</sub>	V <sub>Out</sub> / V <sub>IN</sub>	THD / %	I <sub>A</sub> / mA
200	47	1,20	5,1	12,8	0,8	2,4
250	47	1,20	5,2	13,0	0,7	3,0
300	47	1,20	5,2	13,0	0,5	3,7
350	47	1,20	5,3	13,3	0,4	4,3
400	47	1,20	5,3	13,3	0,4	5,0
200	100	2,20	5,1	12,8	0,8	1,3
250	100	2,20	5,2	13,0	0,6	1,6
300	100	2,20	5,2	13,0	0,5	2,0
350	100	2,20	5,3	13,3	0,4	2,3
400	100	2,20	5,3	13,3	0,3	2,6
200	220	3,90	5,0	12,5	0,8	0,7
250	220	3,90	5,1	12,8	0,6	0,8
300	220	3,90	5,2	13,0	0,5	1,0
350	220	3,90	5,2	13,0	0,4	1,2
400	220	3,90	5,2	13,0	0,4	1,3

**Test arrangement:**



**Bottom View**



**Outline View**

